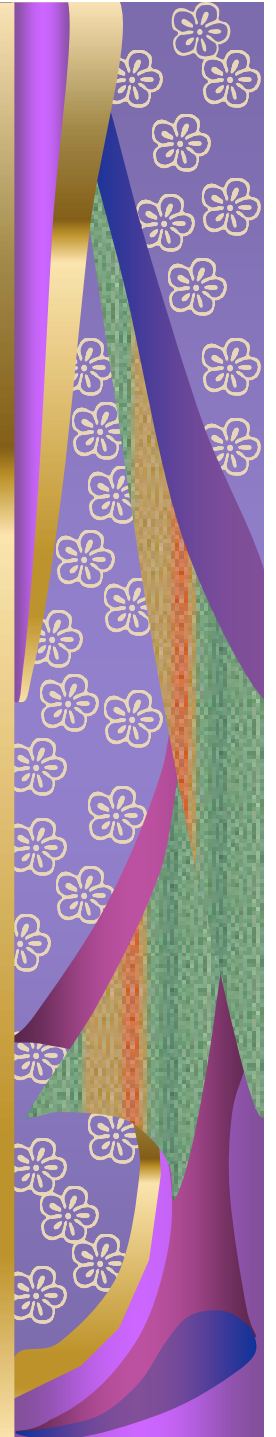


**Empowering and Engaging
Citizens in our Communities:
South West Training & Resource
Centre can help make it happen**

Sue King OBE JP

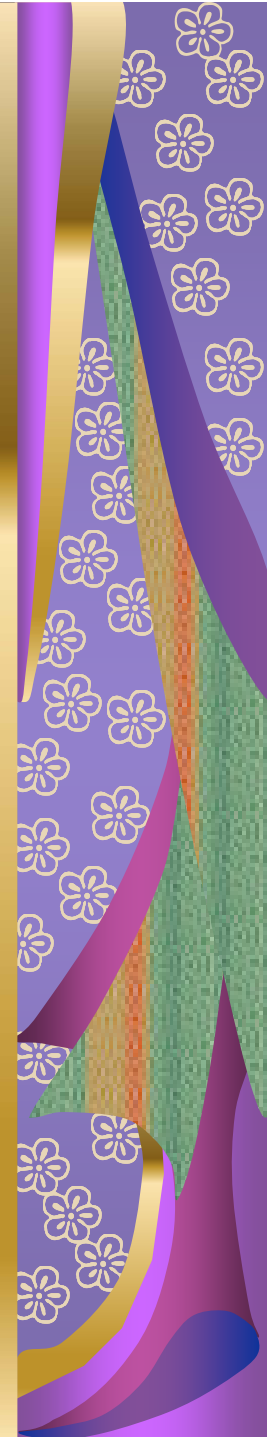
Sue King Regeneration Ltd

sue@sue-king-regeneration.co.uk



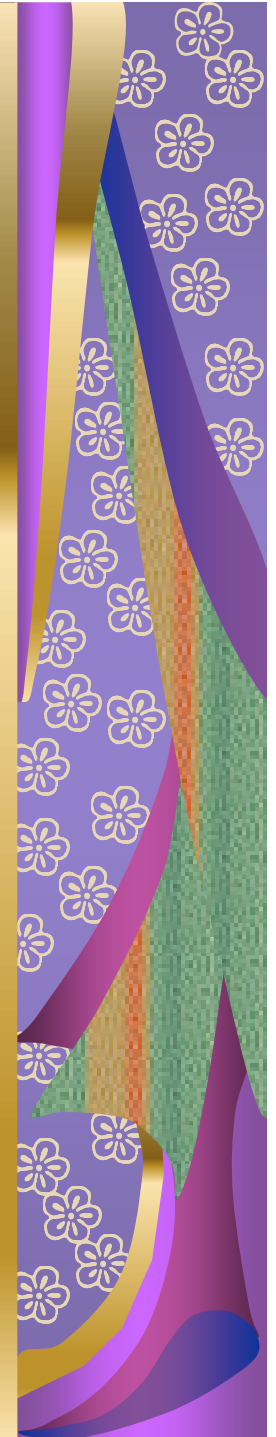
Why Empowerment ?

- More people vote Big Brother than elections
- Local people/young residents feel excluded from decision making/spending
- Only 38% people feel can influence decisions in their area
- All political parties want improved CE- especially of young people
- Can save money/spend money better
- Right thing to do !



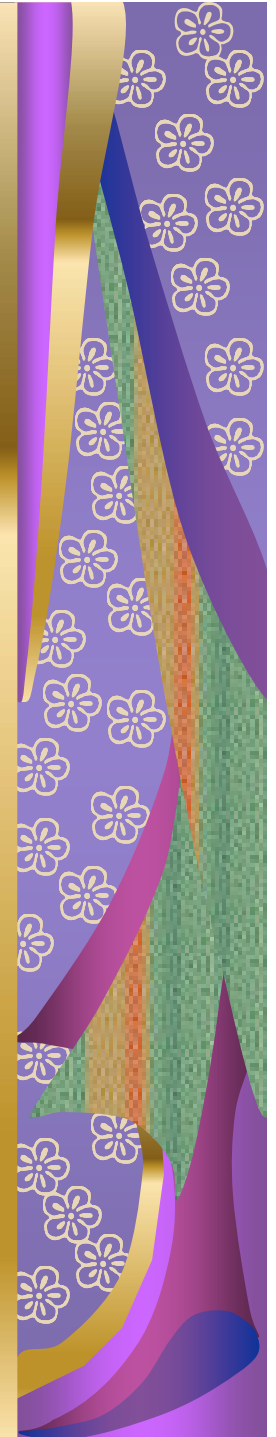
Steps to increase empowerment

- Need to 'grow' new community leaders/champions
- Empowerment champions can encourage and empower other residents and young residents- become multipliers
- Encourage volunteering
- Neighbourhood Apprenticeships- empowers and tackles worklessness-Kent major investment in apprenticeships



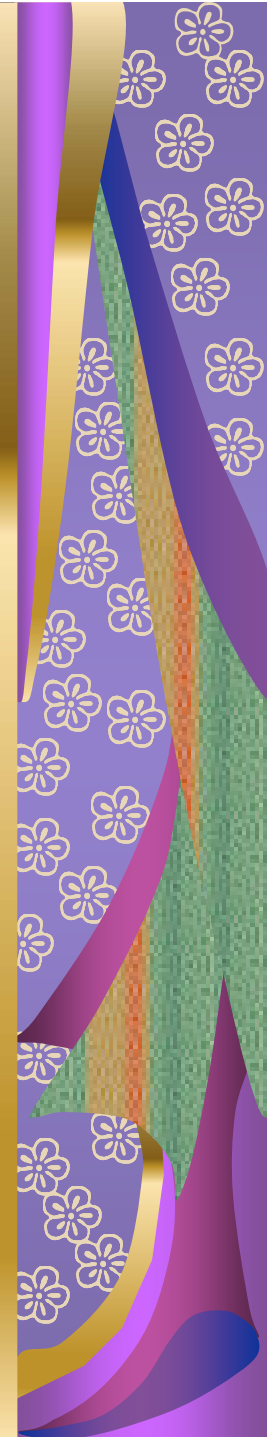
Money is power !

- NMs and NDCs – residents' key role in spending & decision making
- Youth Banks
- Youth Opportunities Fund-run by yp for yp – Dorset £346k Poole £155k
- PB Strategy – pilots Wilts and Cornwall
- Target all LAs using PB by 2012
- Local people know where money can best be spent



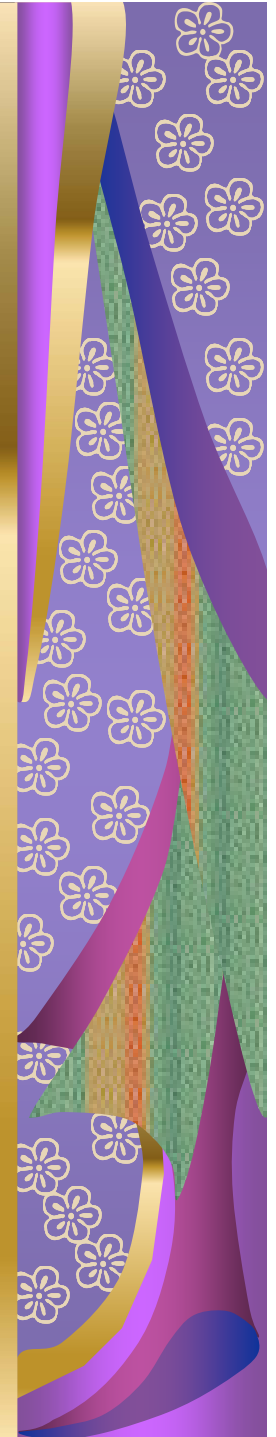
Creating opportunities for residents to take the lead

- Need to ensure residents involved in all key steering groups/consultations
- Create opportunities to showcase effective empowerment locally/regionally
- Invest in networks/action learning groups, events to share what works
- Use creative ways to consult/communicate- 'walking talkers' & 'grumble walks'
- Highlight resident led successes- good practice case studies/dvds made by residents



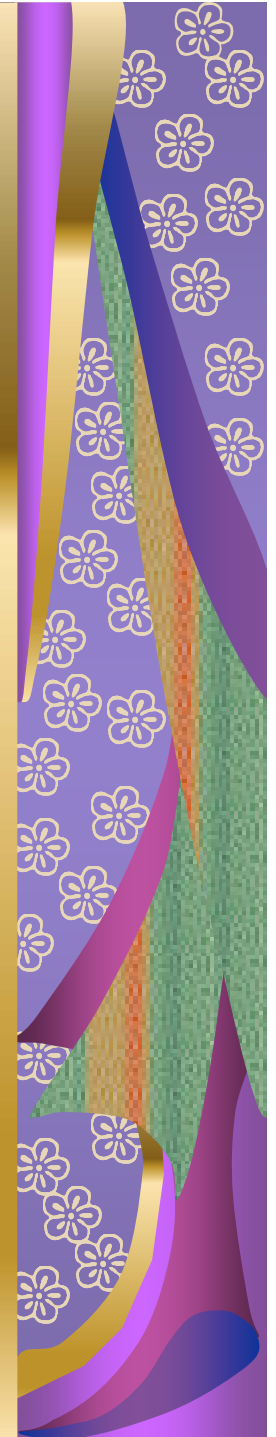
Training and supporting your front line staff

- Staff need to adapt to changing roles and new challenges
- Need to understand Govt and Region's CE priorities
- Need new skills to work in partnership in neighbourhoods with residents and other agencies especially around budgets
- Staff need access to what works, and innovation case studies
- 'Seeing is Believing'- study visits can help spread best practice amongst staff



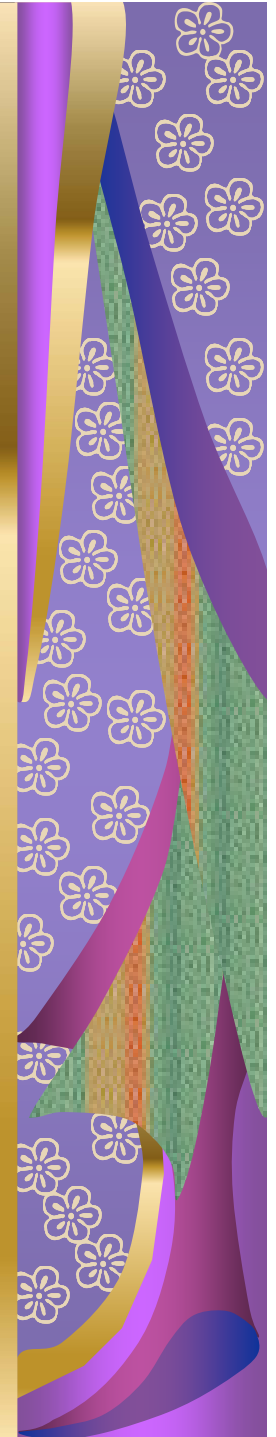
Training and support for elected members

- To understand new CE targets and statutory duties
- Need support to take on enhanced leadership role
- Skills development to share power more with residents
- Need access to link with fellow members via networks & study visits



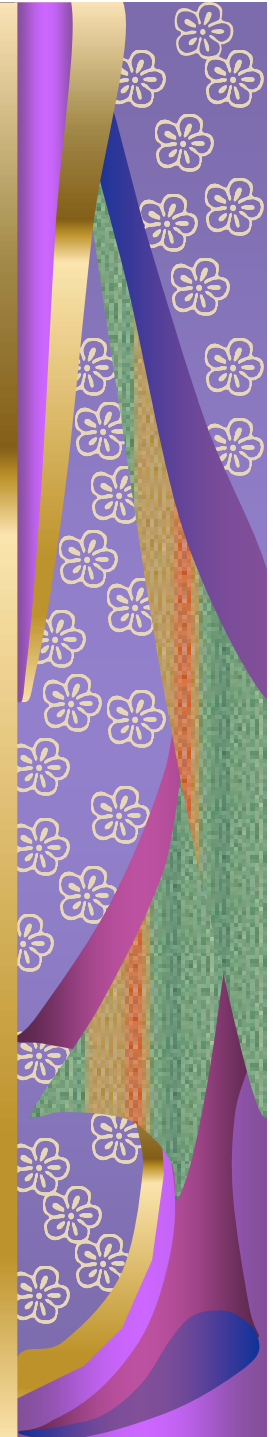
Measuring and reporting on Community Empowerment

- Need training for all partnership members- designing CE Framework to measure, monitor and report outcomes
- Baselines need to be established against which to monitor change
- Collect evidence for CAA inspections
- Got to prove empowerment happening leading to improvements on the ground- need measurement tools



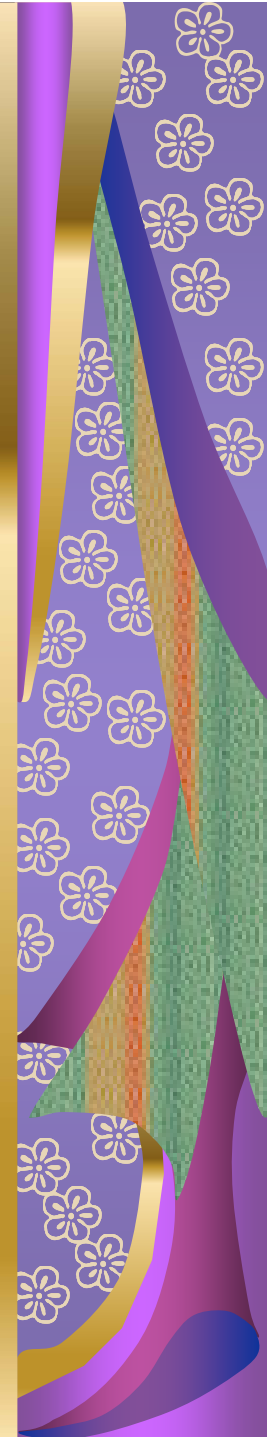
Highlighting Community Empowerment Successes

- Need a CE Comms Strategy
- Articles in local press and LA, HA, Police, Fire, Health etc newsletters/Bulletins
- Encourage residents to speak/write about successes
- Residents' areas in Libraries/community centres
- Residents' contributions to partners' websites and interactive fora
- Document and share successful CE case studies with REP, LIFT, GOSW, CE Champion LAs in region



Your Regional Training and Resource Centre can help

- Track record of successful delivery in neighbourhoods
- 95%+ trainee satisfaction level
- Can develop bespoke training tailored to individual needs
- Experienced network facilitation, study visits, events management, evaluation and coaching

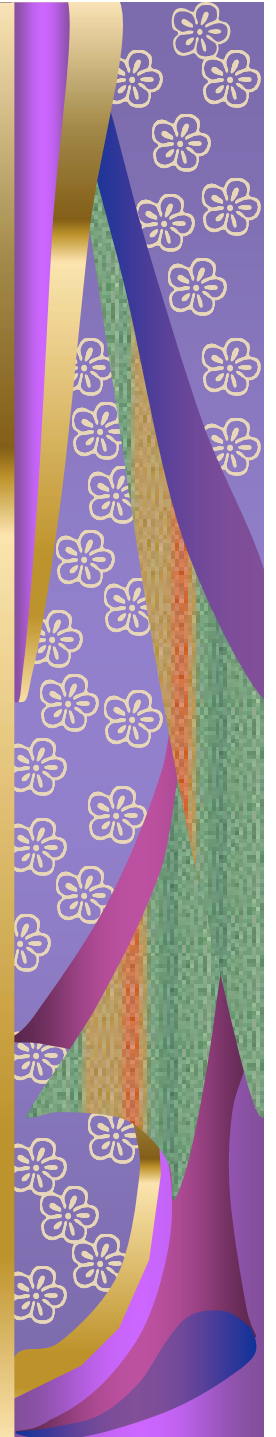


Your Resource Centre is part of a National Alliance

- 6 Centres cover all regions of England
- Shared website and publications see www.neighbourhoodalliance.org.uk
- Centres organise national events to supplement regional activities
- Pooled resources for new courses/service development gives added value for customers
- Feed good practice on the ground back to CLG and all regions
- Case studies and neighbourhoods' knowledge shared nationally

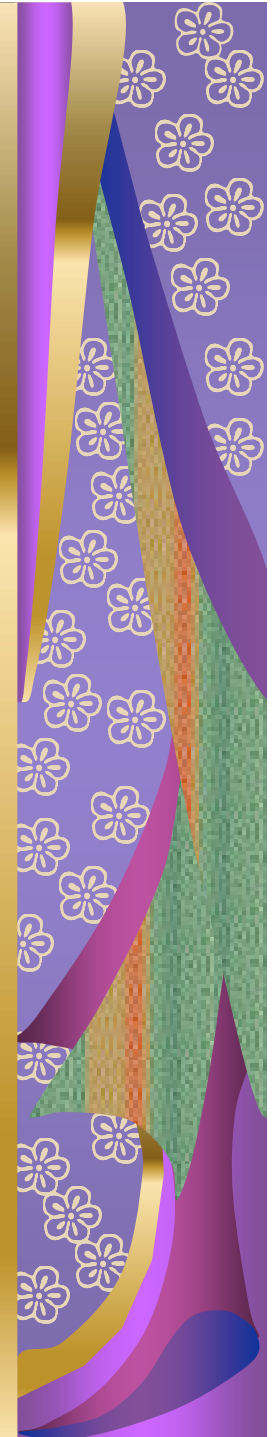


NEIGHBOURHOOD
ALLIANCE



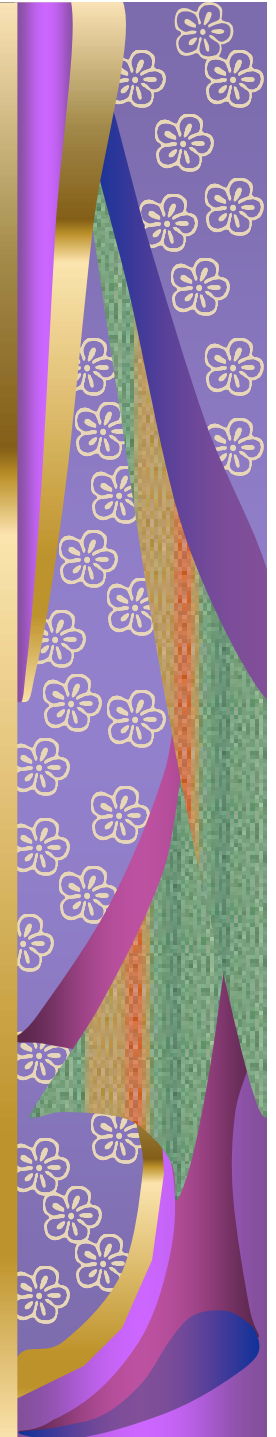
Community Empowerment Offer for South West

- Training/awareness raising for elected members
- Partnership working
- Organisational development
- Achieving Gershon savings
- Neighbourhood warden development and evaluation
- Neighbourhood charters/agreements development
- Restorative Justice/Approaches training for professionals & residents/young residents



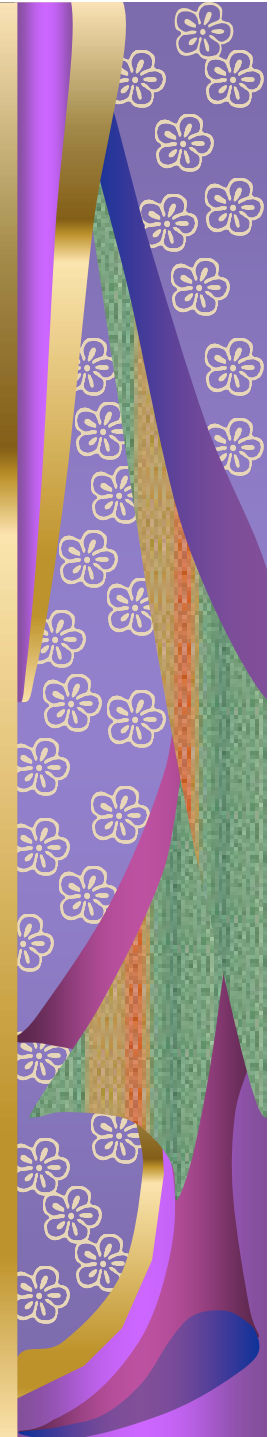
Community Empowerment Package

- Modular CE package for residents, officers and members
- CE awareness raising for front line staff
- Measuring and reporting on CE
- Participatory evaluation training for residents
- CE events, study visits and neighbourhood networks
- Cohesion training and support
- Training and supporting a pool of CE mentors
- CE for HM Courts staff and Magistrates



Community Empowerment is an issue for all agencies

- CE requirement for Police, Health, Fire Schools, Youth Service, Extended Schools as well LAs
- All agencies need to foster leadership amongst residents and young residents
- HAs need to support tenant empowerment
- CAA will assess partnership CE not individual services



A Final thought.....

**Tell me and I'll
forget**

**Show me and I may
remember**

**Involve me and I'll
understand**

